



Senior League Merger Consultation

Monday 13th November



SURREY
CRICKET
FOUNDATION



SENIOR LEAGUE MERGER

Surrey Championship, Surrey Cricket League, Surrey County League

WHY MERGE? WHY NOW?

To find out more via the Surrey Cricket Foundation website, [click here](#).



REGIONALISATION

You want less travel time but not necessarily shorter games. As the costs of travel increase we want to ensure everyone can still play and we have a role to play in reducing our environmental footprint.



COMPETITION

You want to play competitive games for all teams at your club. You want the chance to get promoted. One single structure offers this and more.



SIMPLIFICATION

We all and we want fewer regulations, fewer start times, fewer meetings to attend and so on. Working together we can create more focus and energy on the cricket we all play.



**SURREY
CRICKET
FOUNDATION**

Introduction & Context

- Insight
- League Committee Engagement
- Steering Group
- Workstreams
 - Divisional Make Up & Regionalisation
 - Rules and Playing Conditions
 - Finance and Sponsorship
 - Facilities
 - Governance
 - Officials
 - Discipline, Behaviour & Safeguarding



**SURREY
CRICKET
FOUNDATION**

Introduction & Context

- Insight
- League Committee Engagement
- Steering Group
- Workstreams
 - Divisional Make Up & Regionalisation
 - Rules and Playing Conditions
 - Finance and Sponsorship
 - Facilities
 - Governance
 - Officials
 - Discipline, Behaviour & Safeguarding



The Vision

Maintain and grow the health of senior cricket in Surrey, whilst offering competition for more clubs and reducing overheads around travel and administration for clubs and committees.

We will seek to do this through the creation of a single meritocratic structure in Surrey, consisting of several county wide divisions at the top with progressive regionalisation as you move further down the structure.

The new competition will seek to provide cricket that meets the needs of its players across this wide structure.



Divisional Make Up and Regionalisation

- Define possible structures for the new organisation
- Accommodate 350+ sides
- Requirements and Aims
 - County wide at the top
 - Adhere to all Premier League requirements
 - Fewer one-sided matches
 - Reduce travel – using travel corridors
 - Progressively regionalised



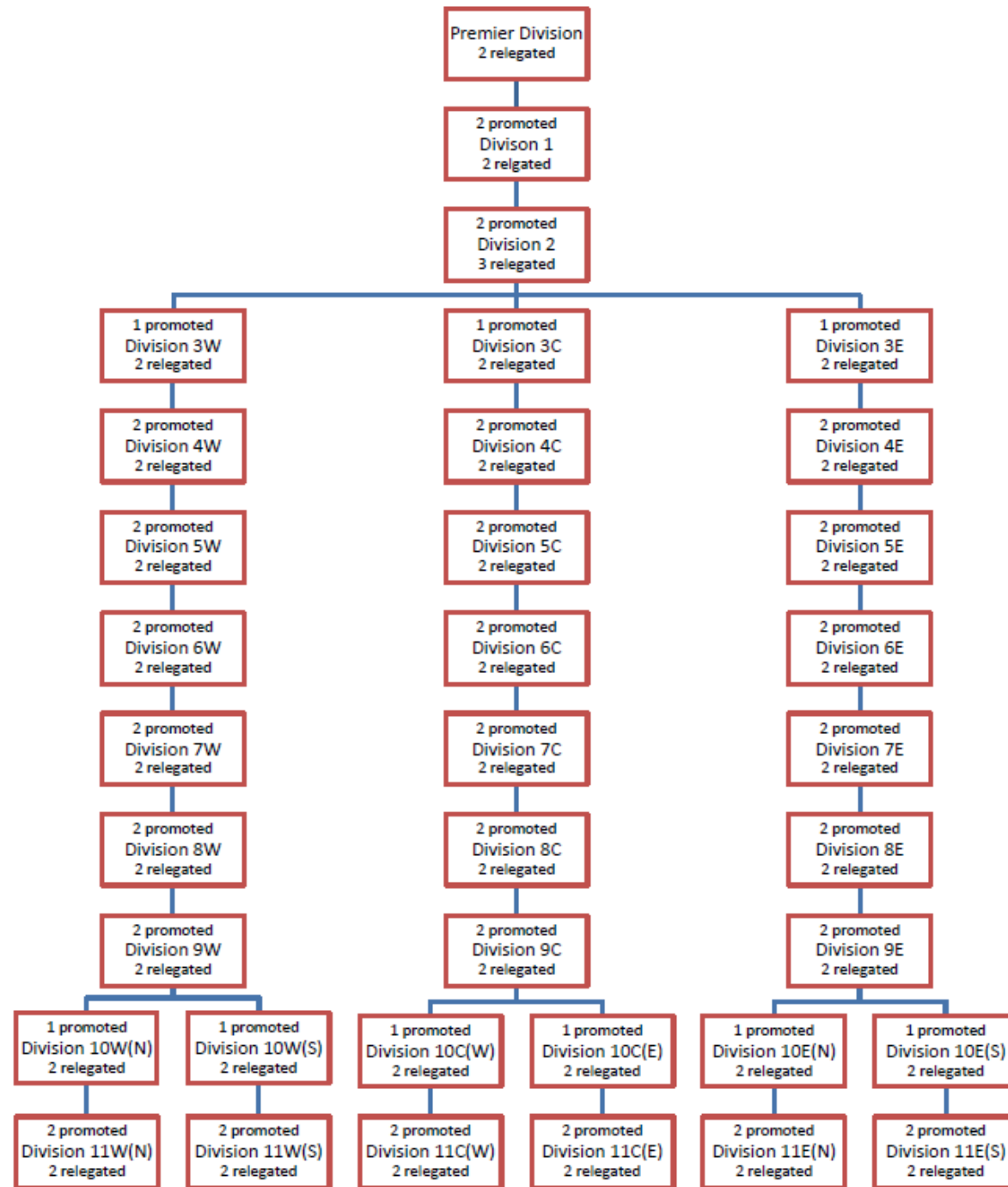
Divisional Make Up and Regionalisation

Key Principles

- Divisional formats
 - All 10 team divisions throughout
 - Playing home and away – 18 fixtures
 - East – West regionalisation may not be the same depths
- Promotion pathway clear
 - Dependent on facility standards
- Flexibility to accommodate new applicants

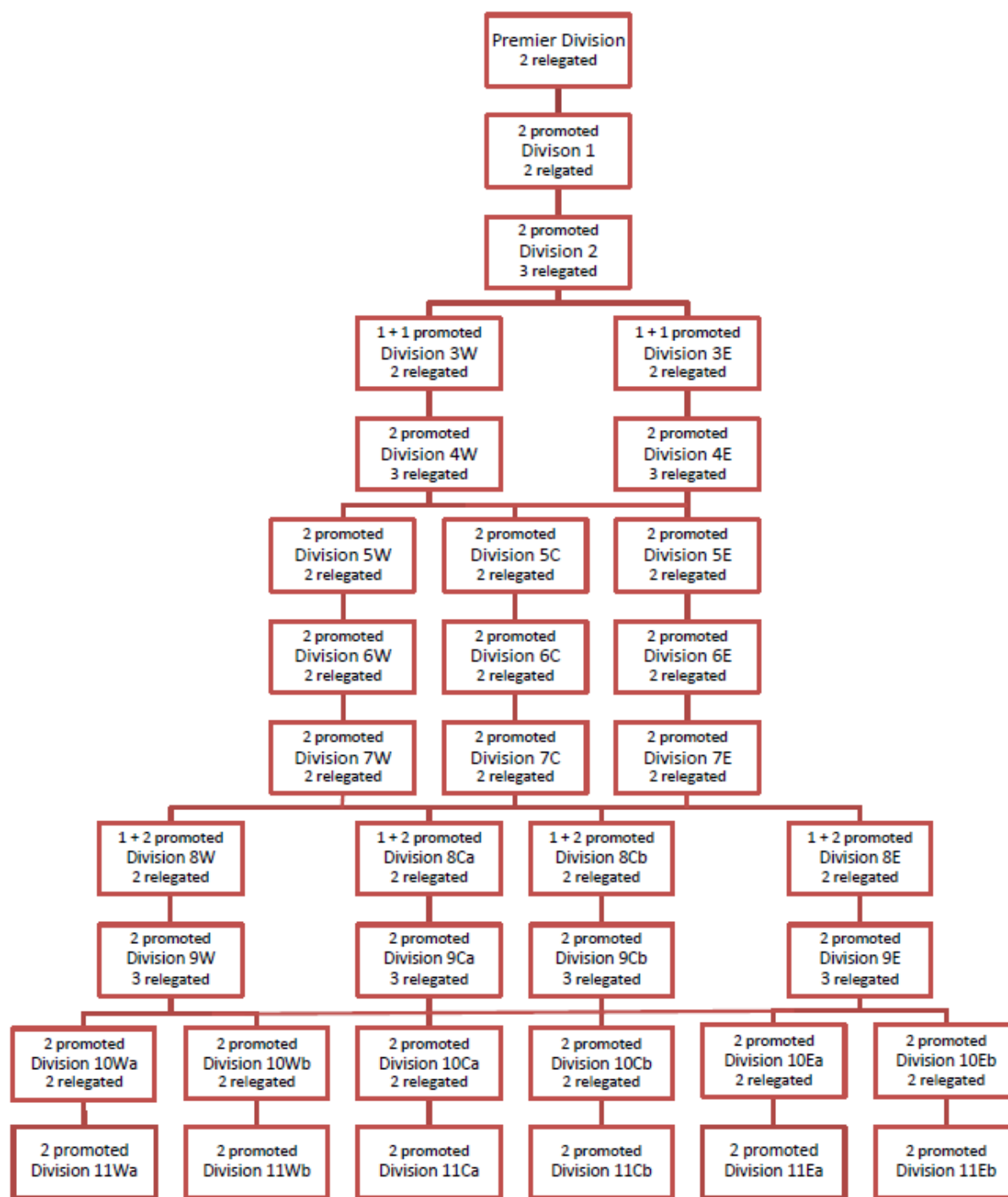


Option 1



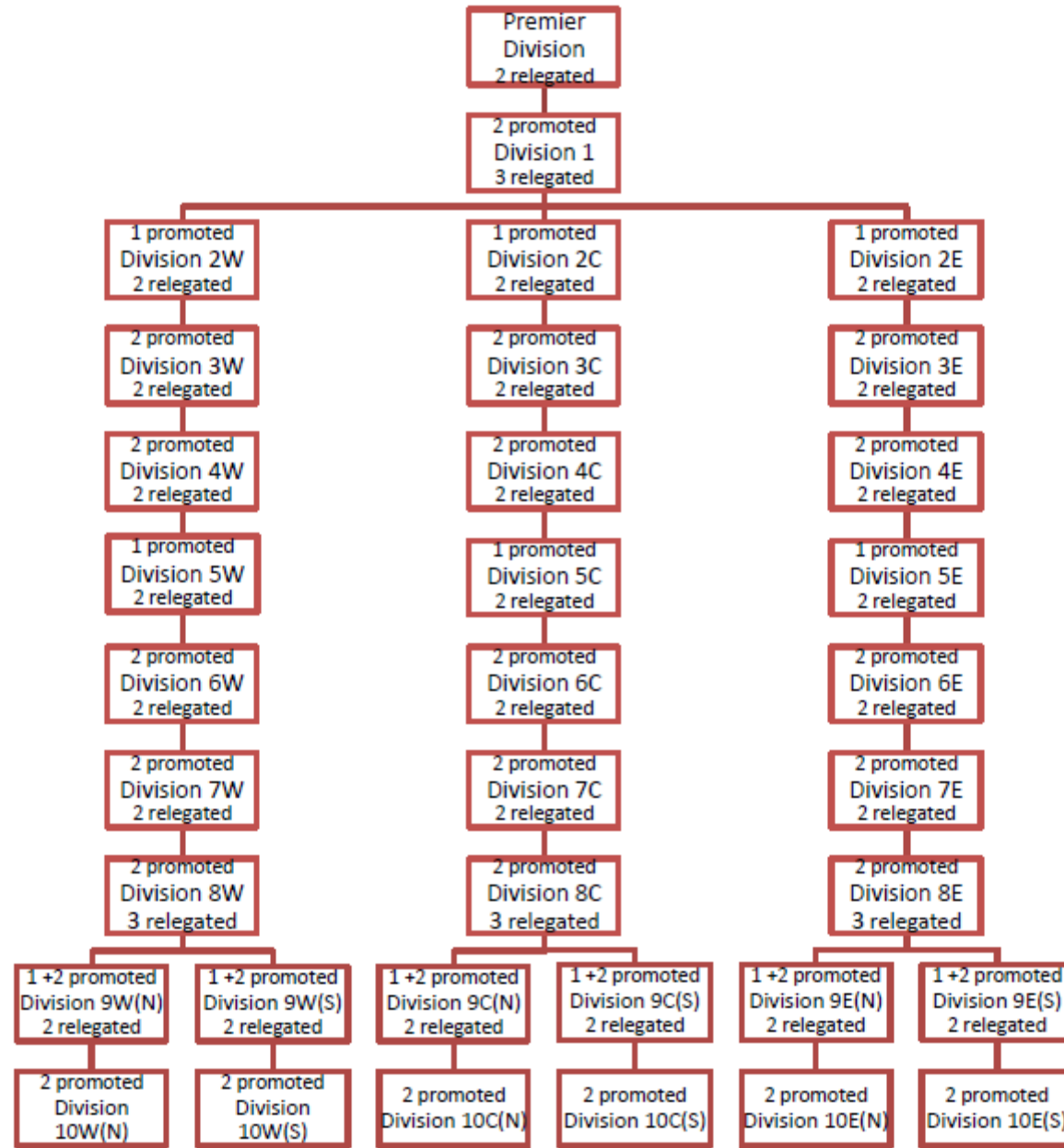
**SURREY
CRICKET
FOUNDATION**

Option 2



SURREY
CRICKET
FOUNDATION

Option 3



SURREY
CRICKET
FOUNDATION

Rules and Playing Conditions

- To create a consolidated and simplified set of Playing Conditions (currently 7 sets across the 3 leagues)
- To be led by insights from players, particularly from the annual player survey
- Main areas for consideration:
 - Format (Timed / Limited overs)
 - Length of Game
 - Start times
- Current Position & Player Survey Data



Working Proposal

	Level A	Level B	Level C	Level D
Season Length	18 Weeks	18 Weeks	18 Weeks	18 Weeks
Match Length	100 /120 overs	100 overs	90 overs	80 overs
Start Time	12pm / 11am	12pm	12pm	12pm
Format	Split Timed / LO	Limited Overs	Limited Overs	Limited Overs



Finance and Sponsorship

- Key part of sustainability of the league
- Different starting positions for leagues (and within leagues)
- All leagues bringing different assets to the table
- Not view as individual league assets but overall assets for the new structure
- Ongoing discussions with existing sponsors positive to date
- Opportunities for expanding sponsorship and partnership offers



Current League Subscriptions

Surrey Championship

- Premier 1st XI and Div's 1-3 £600 – Includes Balls and Umpires
- Div 4 1st XI £300 includes balls and partial umpires
- Div 5 1st XI £75 includes balls and no umpires
- All other XI's £25

The Surrey County League (Shepherd Neame)

- All XI's - £75 includes Balls.

The Surrey Cricket League

- All XI's - £75



SURREY
CRICKET
FOUNDATION



Key Principles

1. All XI's will pay a base level subscription
2. All XI's with mandated Balls and Umpires will pay a higher subscription
3. Sponsorship will be fully used to subsidise and support divisions not supported by the ECB Premier League grant
4. There will be transitional arrangements made for where Umpires and Balls are given/subsidised to clubs/teams at present
5. Aiming to reach a point where all teams pay the same in each division regardless of origin within 2-3 seasons
6. Paid League administrator will be employed to support the league



Facilities

Develop a clear and transparent framework for grounds and facilities within the new structure.

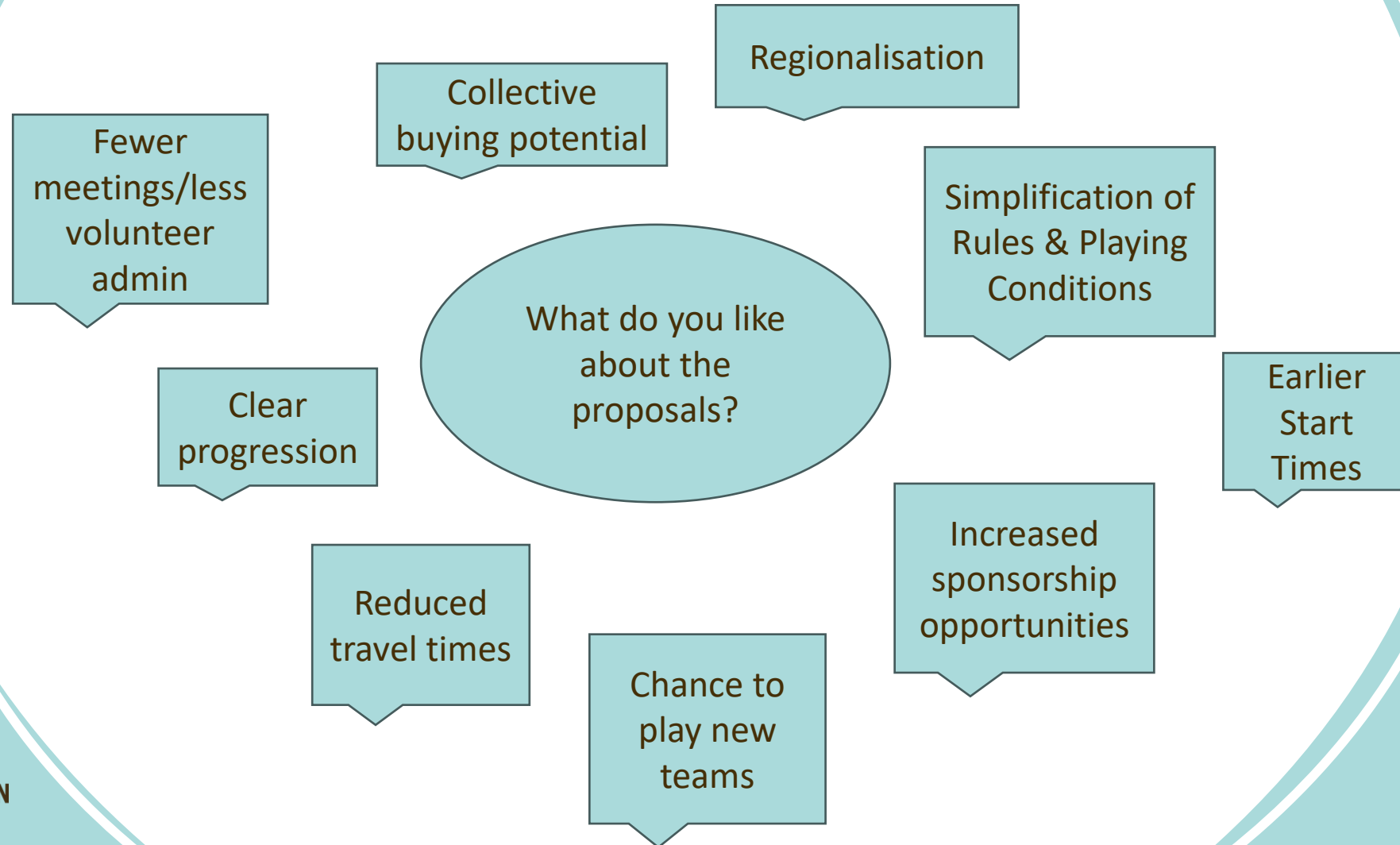
- Reviewed various current examples
- Identified the key elements for inclusion in the framework
- Tiered approach – low entry level
- Ground assessment and technology

The Plan for the Evening

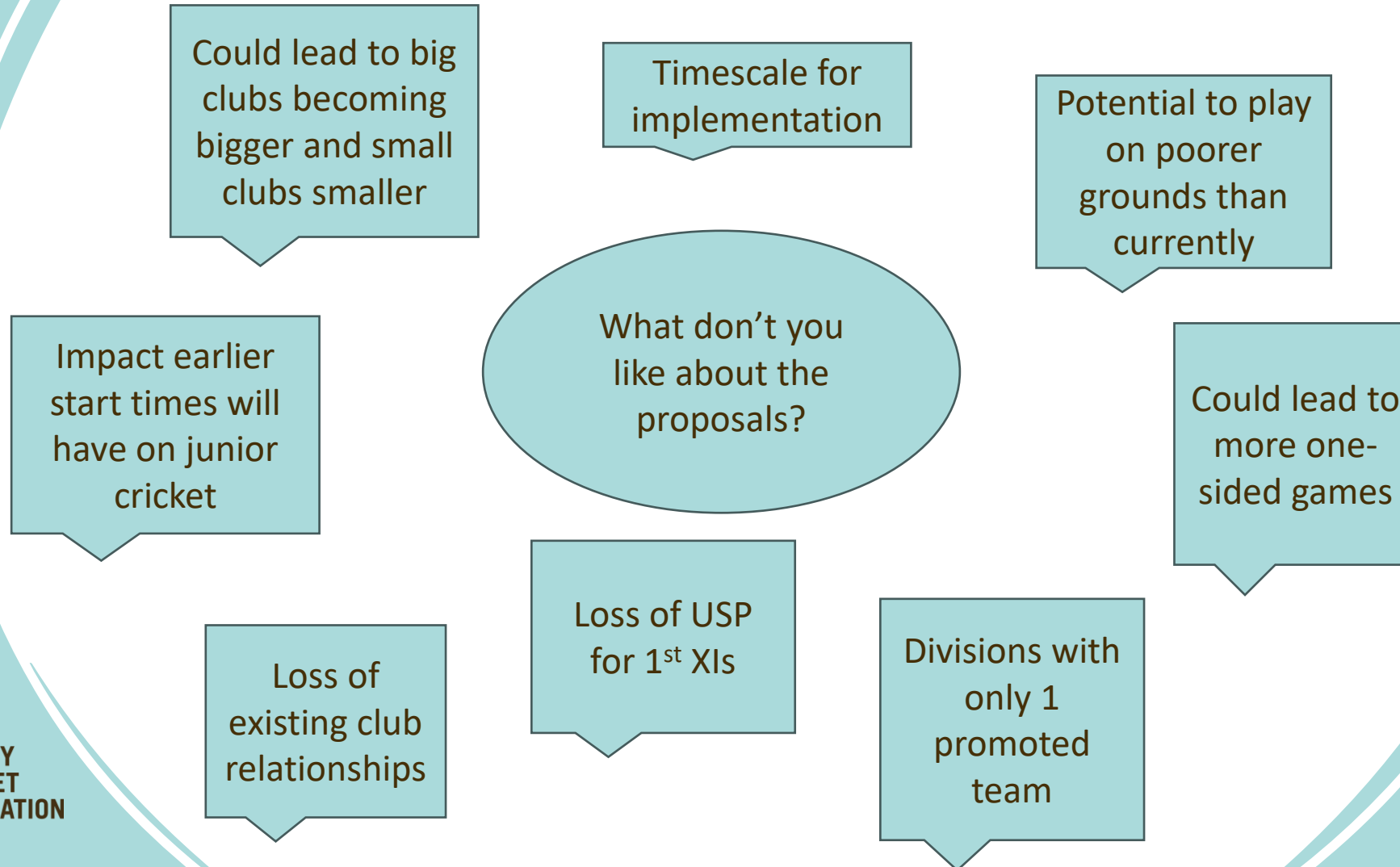
- Summary of face to face sessions
 - What is liked about the proposals
 - Concerns about the proposals
 - Ideas shared
 - Questions...
- Q&A
- Indicative votes



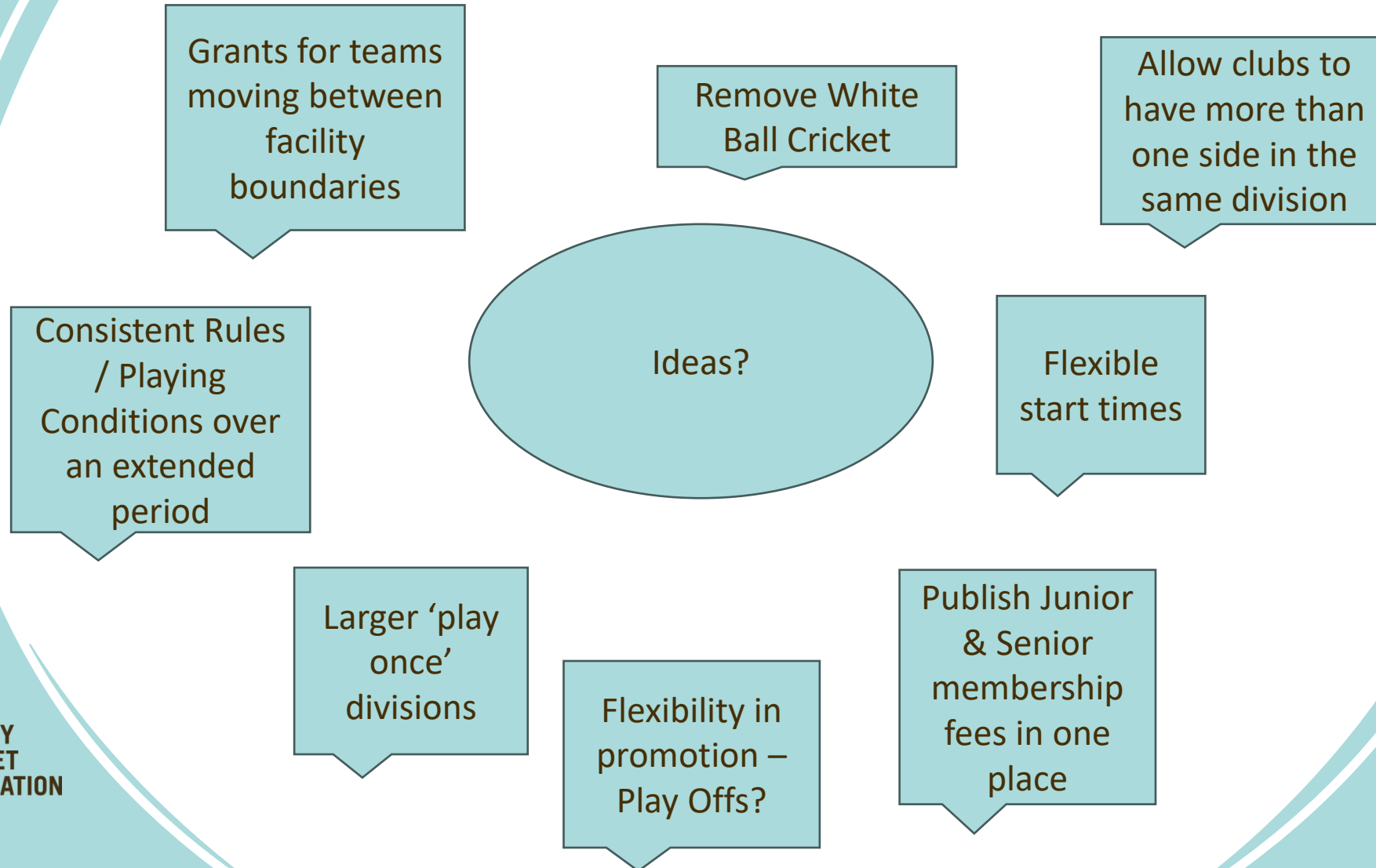
Consultation Feedback



Consultation Feedback



Consultation Feedback



Questions?



**SURREY
CRICKET
FOUNDATION**